

Picture the Past Activity Guide

Purpose: To use historic photos to bring the site to life and to enable a better understanding of the different people who worked here in the past.

Time: Approximately 20 - 30 minutes

Location: Based around the workshop buildings, railway carriage, and crash pit at High Peak Junction and Cromford Canal, if short of time miss the crash pit location.

Resources: Laminated photo location map of High Peak Junction with corresponding photos, **recording sheet (printed at school)**, for each group

Teaching notes:

Split the class into smaller groups, each with an adult, if possible don't have a group yourself, that way you can oversee all the groups and help where needed.

Remind the class that they do not need to go anywhere near the edge of the canal, and they are not to touch any tools or materials they come across without the permission of their adult.

Explain that you are going to give each group a set of old photos (some over 100 years old). The photos show different parts of High Peak Junction and the people who worked there in the past. Each group will also have a map with the different locations marked on it representing where the photo was taken.

The groups can choose which point to go to on the map, when they get there, they need to look at the corresponding photo. Can they compare what they can see today with what was there in the past? Has anything stayed the same? What has changed? Can they see any people in the pictures? What were they wearing? What job were they doing? Would they like that job? etc. A sample question / recording sheet is included that can be filled in by the group adult or just used as an aid to questioning the children.

Alternatively, you could lead the whole class around the different locations and look at and discuss the old photos together.

Whichever way you choose to run this activity it is a great way to bring the site to life and it can really help the children to understand what happened here in the past.



Photo Location 1

1880 – Workshop at High Peak Junction

Photo Location 5

1900 – Pointsman - This man controlled the position of the railway tracks, if wagons were coming down the hill out of control he would hear a bell ringing very fast, he would then pull this lever to divert the train to follow the railway tracks down into the catch pit. You can still see evidence of the last carriage that crashed into the pit.

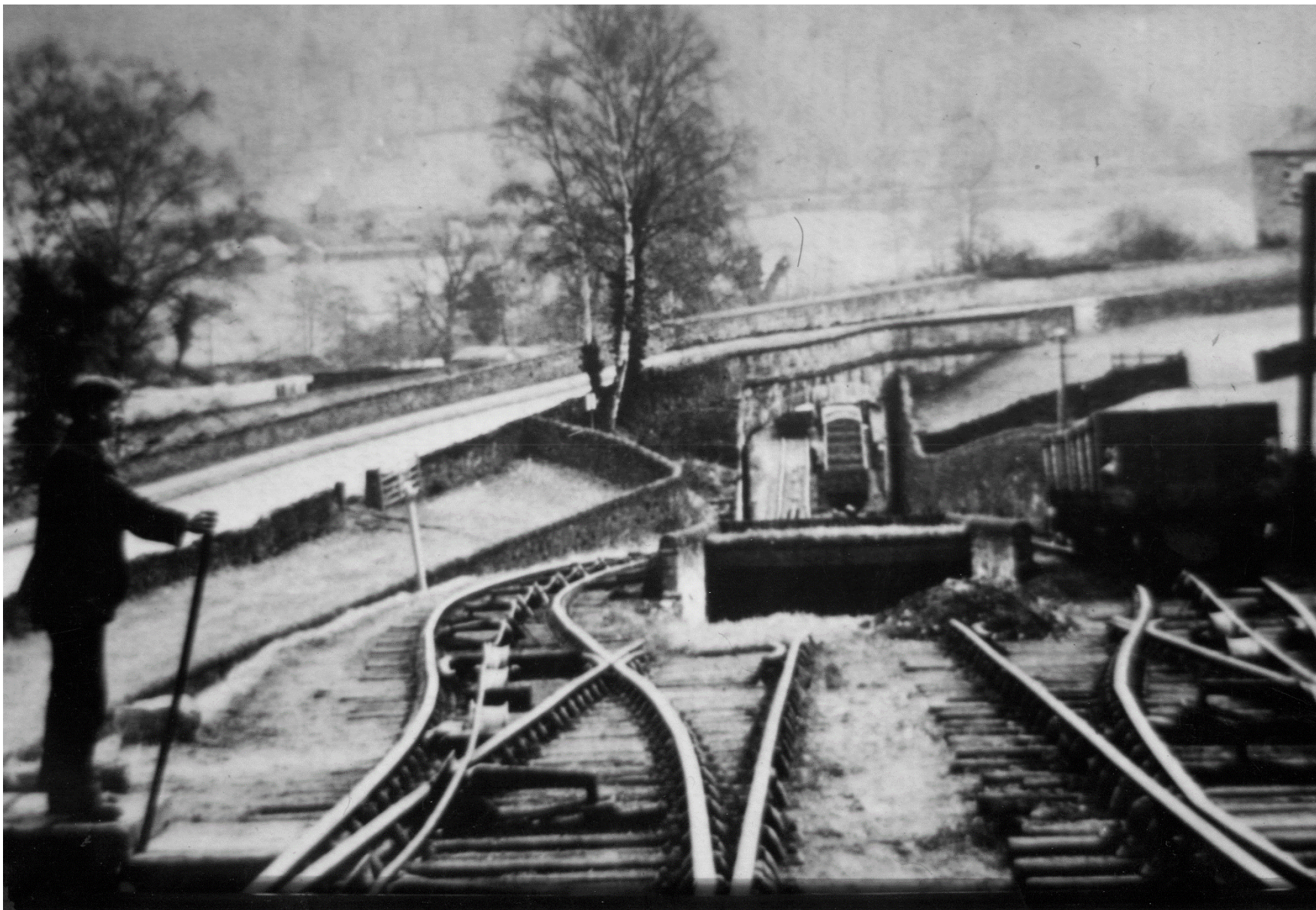




Photo Location 2

1949 – Wagons near the water tank waiting to go up the incline and wagons on the other tracks having come down the incline.

Photo Location 3

1966 – A wagon getting ready to go up the incline. A worker is setting the indicator, on the left, to let the person at the pumphouse at the top of the incline know that the wagon is ready to be pulled up.



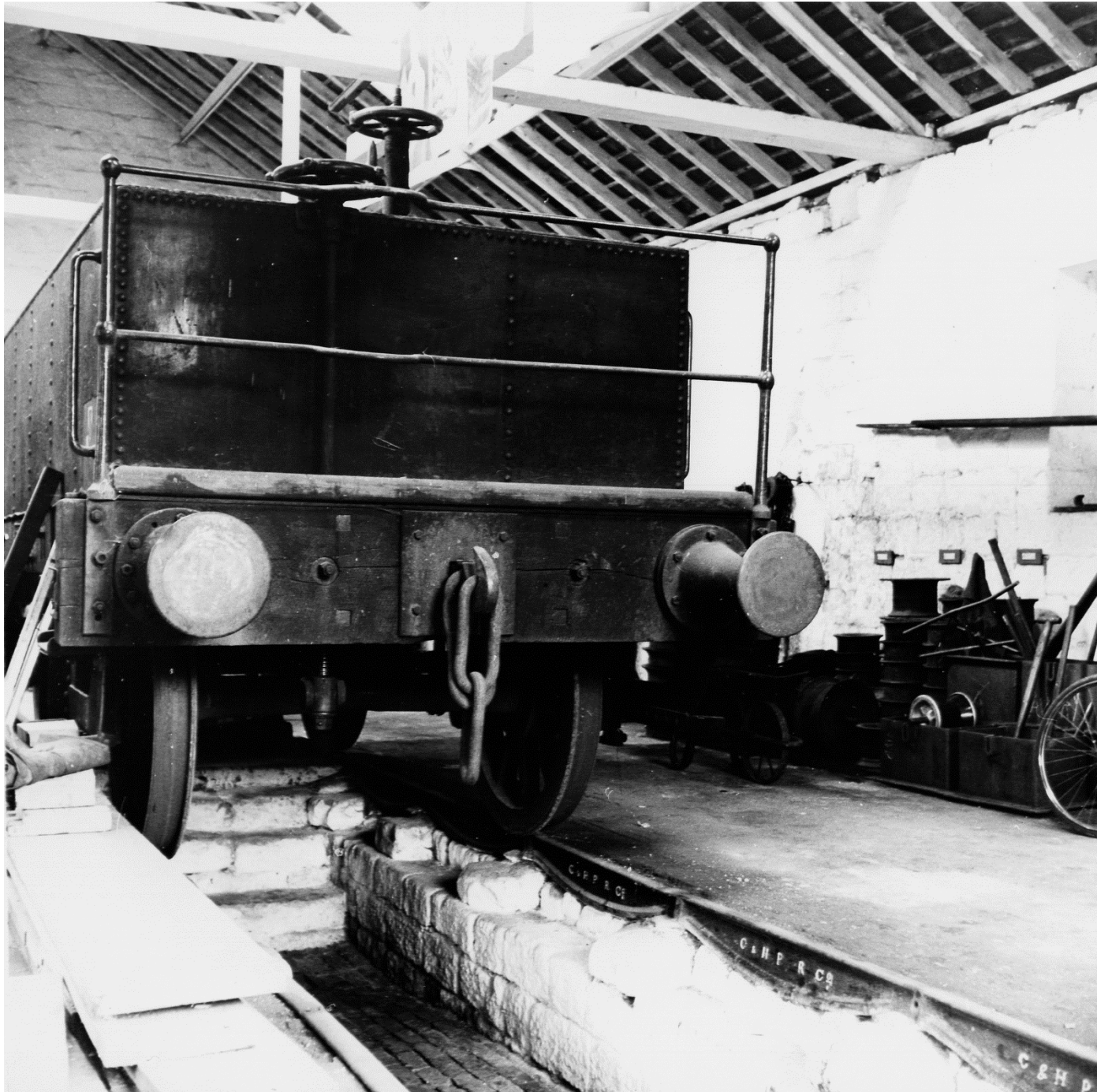


Photo Location 1

1958 – Wagon on the inspection pit in the workshop at High Peak Junction

Photo Location 2

1930 – Locomotive and water tank waiting at High Peak Junction



Map showing locations of old photos



Photo description	Location
1880 – Inside the workshop at HPJ	1
1958 – Inside the workshop at HPJ	1
1930 – Locomotive and water tank at HPJ	Just a bit down from 2, where the red wagons are now.
1949 – Wagons near water tank at HPJ	2
1966 – A worker setting the indicator at the bottom of the incline at HPJ	3
1900 – A Pointsman controlling the railway track near the catchpit	If you walk up a little from the catchpit (5) you will be closer to where the Pointsman stood.

Key questions / recording sheet for Picture the Past activity

Photo description / title		
Examples of what to look for in the old photo	Answers / notes	What can we still see today?
People What are they wearing? What job are they doing? Would you like that job?		
Railways? Are there railway tracks, what are they like? Can you see any Locomotives or wagons, what are they doing?		
Landscape Can you see any buildings? What shape is the land e.g. hills, bends etc. What other features can you see?		
Photo description / title		
Examples of what to look for in the old photo	Answers / notes	What can we still see today?
People What are they wearing? What job are they doing? Would you like that job?		
Railways? Are there railway tracks, what are they like? Can you see any Locomotives or wagons, what are they doing?		
Landscape Can you see any buildings? What shape is the land e.g. hills, bends etc. What other features can you see?		