

DERWENT VALLEY MILLS WORLD HERITAGE SITE

# Annual Monitoring Report

April 2003 – March 2004





## Monitoring Report

One of the key management responsibilities of a World Heritage Site is monitoring the site to ensure that its Universal Value is maintained. UNESCO's Operational Guidelines (March 1999) requires the submission of periodic reports to assess the state of conservation of the World Heritage Sites as well as focus future activities and funds. In addition paragraph 72 states that 'It is necessary that every year the condition of the property be recorded by the site manager or the agency with management authority'. In order to comply with the guidelines, the production and distribution of an annual monitoring report is identified as an action under objective 25 of the Management Plan.

This is the first annual report undertaken for the DVMWHS and covers the period from April 2003 to end of March 2004. It has been prepared in liaison with members of the Derwent Valley Mills Partnership. It includes the work undertaken by numerous different individuals, groups and organisations within the site to achieve the strategic aims of the Management Plan.

## Introduction

In December 2001, the Derwent Valley between Matlock Bath and Derby was designated a World Heritage Site by UNESCO (the United Nations Educational, Scientific and Cultural Organisation). World Heritage status confirms the Universal Value of the area as the birthplace of the factory system – where water power was first successfully harnessed for textile production – a milestone in the Industrial Revolution.

One of the key management responsibilities of a World Heritage Site is monitoring the site to ensure that its Universal Value is maintained. UNESCO's Operational Guidelines (March 1999) requires the submission of periodic reports to assess the state of conservation of the World Heritage Sites as well as focus future activities and funds. In addition paragraph 72 states that 'It is necessary that every year the condition of the property be recorded by the site manager or the agency with management authority'. In order to comply with the guidelines, the production and distribution of an annual monitoring report is identified as an action under objective 25 of the Management Plan.

This is the first annual report undertaken for the DVMWHS and covers the period from April 2003 to end of March 2004. It has been prepared in liaison with members of the Derwent Valley Mills Partnership. It includes the work undertaken by numerous different individuals, groups and organisations within the site to achieve the strategic aims of the Management Plan. It is intended to:

- Identify the work and achievements for the past year.
- Review the condition and progress of conservation of the site
- Monitor the implementation of the Management Plan Objectives and Actions
- Assess the effectiveness of management of the site and identify any changes required
- Inform partners and the public of progress
- Help set prioritise actions for the coming year.

## Summary of Major Achievements

During the progress of bringing together information on work which has been implemented throughout the site over the past year by a number of partner bodies it has become apparent that a huge amount has been achieved. It is encouraging to see that many of the pre set objectives and actions in the management plan for the year have been met or are in the progress of being delivered. In addition there have been additional successes not identified in the plan. The Arkwright Painting Appeal demonstrated how the Partnership could take on an unforeseen challenge and, with the involvement of national funding bodies and the local community, achieve the goal.

The achievements are due to hard work of many partners, volunteers and the local community organisations and individuals. Although World Heritage Site designation does not bring it any specific funds it has raised the profile and status of the site and has unlocked funds from a number of organisations and sponsors to enable the works to be implemented.

The report covers the achievements and documents the majority of work that has taken place within the site in accordance with the objectives set in the Management Plan.

The main achievements include:

- £303,000 grant secured from Derby and Derbyshire Economic Partnership to enable the delivery of key elements of the Derwent Valley Mills Partnership Programme up to March 2006.
- More than £1.2 million raised to save the portrait of Richard Arkwright junior, his wife and child by Joseph Wright of Derby from export and secure its permanent display in Derby.
- Cromford Mill featured on the BBC 2 Restoration series and received the second highest vote count of the series.
- Belper named as one of the nine 'Beacon Towns' chosen by the Countryside Agency as test beds for a new initiative aimed at revitalising England's Market Towns.
- The Silk Mill was awarded a Gold Award in the National Green Apple Civic Pride Awards.
- The Derwent Valley Heritage Way walking route opened.
- The Transportation Study completed and published.
- Cromford Mill viewing platform erected.
- The Prince of Wales visited Cromford Mill.
- Liz Forgan, Chair of the Heritage Lottery Fund presented the Arkwright Society Lecture.
- Cromford Historic Paving Study completed.
- Condition Surveys for Belper North Mill and Belper Horseshoe Weir completed
- Applications for the re-instatement of the upper floors/roof and reinstatement of the water wheel for the first mill Building 18 Cromford Mill submitted.
- Cromford Canal studies commissioned.
- Sir Richard Arkwright's Masson Mills featured on Discovery Channel.
- A toll house built by Jedediah Strutt 20, 23, and 24 Derby Road, Belper added to the Statutory List.
- Repairs on three buildings on the Buildings at Risk Register near completion (building No1 Cromford, Slinter Cottage and Canal Cottages Ambergate).
- The Landscape Character of Derbyshire Published.
- New part time post of Communications and Outreach Officer established and filled.
- New site Co-ordinator Appointed.
- The Derwent Valley Mills and Their Communities published.
- River Navigation Feasibility Study for Derby to Darley Abbey commissioned and completed.

## The Management Plan

The DVMP has delegated responsibility under the terms of an international treaty (the UNESCO World Heritage Convention 1972) for the conservation, management, enhancement and interpretation of the Derwent Valley Mills World Heritage Site. The DVMP's responsibilities under the Convention are set out within a management plan.

The Management Plan was adopted for the site in April 2003, following extensive consultation on two consultation drafts. The plan provides a framework for the integrated and proactive management of this cultural landscape, helping to ensure that its special qualities are sustained and preserved for future generations. The plan provides a context in which those who live and work occupy or own property, in the site or the adjacent buffer zone can participate in, and contribute to, the conservation of the site.

Its overarching mission is: **to conserve the unique and important cultural landscape of the Derwent Valley Mills World Heritage Site; to interpret and promote its assets; and to enhance its character, appearance and economic well-being in a sustainable manner.**

The Management Plan identifies 6 strategic aims and set out specific objectives and actions to meet these aims.

The Aims are:

1. To identify the key issues affecting the vulnerability of the cultural landscape, opportunities for its enhancement and measures to protect the cultural significance of the site.
2. To establish guidelines for the future management of the site, and the buildings and land within it, so that the special character of the cultural landscape is protected and enhanced.
3. To increase public awareness of, and interest in, the site; to realise its full potential as an education and learning resource; and to establish a co-ordinated research framework.
4. To develop an integrated and sustainable approach to meeting the transportation needs of the site.
5. To identify how present and possible future tourism within the site can be developed in an environmentally and economically sustainable way for the benefit of the local economy.
6. To provide a common framework in which owners, occupiers, residents, public and voluntary agencies can pursue individual and partnership action plans; and to establish lasting mechanisms for monitoring, co-ordination and consultation.

The first of these aims is mainly covered by part 1 of the Management Plan and although this is an ongoing process it will only be formally reviewed as part of the periodic review process. The report will be based on each of the remaining aims and identify the works which have been implemented to meet these objectives.

## Management Guidelines and Monitoring, Conservation and Maintenance of the Cultural Heritage

Objective 1: Ensure that the statutory Development Plan and Supplementary Planning Guidance provide policies for development that recognises the significance of the site.

One potential threat to the Outstanding Universal Value of the World Heritage Site is the impact of new development. As section 54A of the Town and Country Planning Act provides that determination under the Planning Acts must be made in accordance with the development plan, unless material considerations indicate otherwise, it is essential that the local plans contain adequate policies to protect the site and its setting.

The majority of the site falls within the area covered by Derby and Derbyshire Joint Structure Plan adopted in January 2001 which includes a policy stating that development will not be permitted where it would adversely affect the World Heritage Site or its setting.

In addition the World Heritage Site is covered by policies in the Local Plans for the four planning authorities: Derbyshire Dales District Council, Amber Valley Borough Council, Erewash Borough Council and Derby City Council.

### Derbyshire Dales District Council

The Derbyshire Dales adopted Local Plan (September 1998) does not make any specific reference to the DVMWHS within its policies as it was produced prior to inscription. The inquiry has just begun on the new Local Plan and the Inspectors report is expected by the end of this year, with adoption sometime in 2005. The Revised Deposit Draft currently includes a policy specifically relating to the DVMWHS, which states that: -

Planning permission for development within the Derwent Valley World Heritage Site, as defined on the Proposals Map, will only be granted where it does not have an adverse impact upon its character and appearance.

This policy also includes "Planning permission for development within the Derwent Valley Mills World Heritage Site buffer zone, as defined on the Proposals Map, will only be granted where it does not have an adverse impact upon the setting of the World Heritage Site".

### Amber Valley Borough Council

The Amber Valley Borough Local Plan Review Inquiry is nearing completion, and the inspector's report is expected by the end of this year and the new Local Plan should be adopted by the middle of next year. The policy related to the World Heritage Site is as follows:

"Within the Derwent Valley Mills World Heritage Site, as shown on the Proposals Map, the Borough Council will require all development proposals to preserve or enhance its character and appearance.

Within the Derwent Valley Mills World Heritage Site Buffer Zone, as shown on the Proposals Map, the Borough Council will require all development proposals to preserve or enhance the setting of the World Heritage Site, including views into and out of the site.

Proposals will also be considered in relation to the aims and objectives of the Derwent Valley Mills World Heritage Site Management Plan”.

A new system for the preparation of development plans is to be introduced shortly. It is intended that Conservation Area Appraisals will be produced as Supplementary Planning Documents, which will carry more weight than the current Supplementary Planning Guidance. This process can only be progressed once the Local Development Scheme has been approved by the Secretary of State, which is unlikely to be until the end of this year.

#### Erewash Borough Council

The Erewash Local Plan Inquiry was concluded in March 2004 and the report and recommendations are expected by 23<sup>rd</sup> September 2004. The policy on the World Heritage Site is ENV 17:

“Within the defined World Heritage Site and Buffer Zone, as shown on the proposals map, development will only be permitted if it does not have an adverse effect on the World Heritage Site or its setting, and it accords with other policies in the Local Plan. Development, traffic generation, scale and design, materials of construction, any loss of historical landscape or cultural heritage, and environmental impact”.

#### Derby City Council

The second deposit version of the City of Derby Local Plan has been subjected to a Public Local Inquiry and the Inspector’s report is awaited. It includes policy E32 on protection of the World Heritage Site and its surroundings:

Within the area nominated for World Heritage site status, proposals which would have an adverse effect on the special character of the area will not be allowed. Planning permission will only be granted for developments, including changes of use and conversions, which meet the following criteria:

- a. To preserve and enhance the special character of the area;
- b. To encourage the physical and economic revitalisation of the area;
- c. To ensure that new buildings enhance the area in terms of siting and alignment of new buildings, the materials used and the mass, scale and design of buildings; and
- d. To ensure that new development does not harm and where possible conserves and enhances the biodiversity of the area.

Significant development proposals will require special scrutiny.

The reasoned justification also refers to the inscription of the site on the World Heritage List and the adoption of the Management Plan as Supplementary Planning Guidance.

Objective 2: Ensure that protection within the policy framework, when developed, remains effective in the long-term

The effectiveness of the policies and their implementation can be assessed by monitoring planning decisions within the site and buffer zone. Key indicators for the site were established in 2001, however due to the complexity of the site and the fact these were only quantitative, in practice the information assembled was not informative. These indicators need to be reviewed and updated and we are awaiting further guidelines from the State Party. In the meantime this report attempts to monitor and review the major applications on a more qualitative basis.

There are a number of large development sites within the Belper area of the World Heritage Site, which have been approved or are under consideration by Amber Valley Borough Council. Three of these are of considerable significance to the World Heritage Site, as they include the archaeological remains of

Strutt's 18<sup>th</sup> Century Milford Mills, Strutt's early 19<sup>th</sup> century Milford Foundry and Gasworks, and Wards 19<sup>th</sup> century warehouse and associated cottage.

A re-development scheme for the former Fuch's Lubricants site, Derby Road, Belper was granted planning permission on 7 October 2003. This comprises of a mixed use development including an hotel, restaurant, offices and residential unit. It is envisaged that the new development will provide continued employment opportunities for local residents and the hotel is expected to make a significant contribution to the tourist industry of the town and area.

Development briefs were produced by Amber Valley Borough Council in October 2003 for the Milford Mill and the Milford Foundry sites. These provide further information about the history of the sites and the Strutt developments. Pre application discussions with the developers have secured agreement to the industrial archaeology interest of the sites being interpreted as part of any development. In February 2004 an application for the redevelopment of the Milford Foundry site was received and is being considered by the Local Planning Authority.

A Masterplan for the area in Belper to the west of the A6 is in preparation. This could have very significant implications for the future of the town and the development role for the town as a visitor destination.

In Cromford a number of proposals affecting significant buildings in the World Heritage Site have been approved by Derbyshire Dales District Council. At Cromford Mill a new viewing platform has been constructed enabling visitors to have a dramatic view of the wheel pit and archaeological remains of the second mill. A scheme for new signage and interpretation material has also been approved for the Cromford Mill site.

Planning permission and listed building consent has been granted for two other sites on the Buildings at Risk register, 7 The Hill and associated buildings at Swifts Hollow and the east platform building at Cromford Railway Station. It is hoped that these schemes will be implemented soon in order to stave off further decay.

In Derby a small number of development proposals affecting the southernmost part of the WHS have been assessed because of their impact on the site, with English Heritage involvement. Prospective applicants for development of a key site within the buffer zone at Full Street have been asked to consult with ICOMOS, CABE and English Heritage before submitting proposals formally. In addition the Urban Regeneration Company, Derby Cityscape Ltd, has been working through its consultants to ensure that an emerging 'masterplan' for the City Centre takes into account the significance of the World Heritage Site.

The City Council has also been obliged to advise ICOMOS, UNESCO and DCMS on alleged impacts of developments outside the site and buffer zone, as people attempt to use the Partnership's policies to block development elsewhere. Whilst an unfortunate trend which diverts attention and resources from management plan objectives that it is to be expected where a site of this complexity penetrates a densely populated built up area.

During the year the technical panel have discussed a number of issues which have arisen out of the development control decision making process. In particular the need for more specific guidelines on signage within the site and also extensions to workers cottages. The update of the brand and interpretation guides, which will be available on the new website, aims to address the issue of signage. A requirement for Supplementary Planning Guidance for the back-to-back millworkers cottages at the East and West Terraces, Milford has been identified. The work to produce it will commence once the Townscape Heritage Initiative for the Belper and Milford Conservation Area has been established.

### Objective 3: Review records of statutory designations for protection

Statutory Designations act as a further method of conserving the special interest and universal value of the site in the form of Scheduled Monuments, Sites and Monuments Record, Listed Buildings, Locally listed buildings, Register of Parks and Gardens and Conservation Areas.

These are kept under continual review as more information comes to light on the significance of individual buildings, areas and archaeology. A method of monitoring these changes is listing the additions to the list.

#### Listed Buildings

Amber Valley Borough Council was informed by the owners of their intention to demolish 20, 23 and 24 Derby Road, Belper. This prompted an investigation into their significance. In 1793 Jedediah Strutt obtained an Act of Parliament to allow him to construct a private toll road to service his cotton mills. A Strutt estate map of 1806 shows 20, 23, and 24 Derby Road, Belper next to a toll bar across this 'Messrs. Strutts New Road'. The central cottage was the toll house. In the light of this research the three properties were added to the Statutory List, grade II, on 12 November 2003.

#### Conservation Areas

The Derwent Valley Mills World Heritage Site includes the whole or part of thirteen pre-existing Conservation Areas, covering four local authorities. A further two are wholly or partly within the Buffer Zone.

At the time of nomination the existing Conservation Area boundaries and other statutory and formal designations were used to define the boundaries of the World Heritage Site and its Buffer Zone. More recent research has revealed that the boundaries require review in order to take into consideration the Site's outstanding universal significance. For example, some parts of the major linear threads that unite the World Heritage Site; the River Derwent, the Cromford Canal, the railway and the former turnpike road the A6, that are integral to its historic significance, are located outside existing built environment protective designations.

In July 2003 Amber Valley Borough Council designated a revised Conservation Area for Belper. This combined the Belper and Milford Conservation Areas and was drawn to take account of the boundary of the World Heritage Site. A Conservation Area Character Statement is now being prepared.

A review of some of the other conservation area boundaries has been commissioned including: Cromford, Castle Top, Lea Bridge and High Peak Junction, Whatstandwell, Dethick, Lea and Holloway, Strutt's Park, Little Chester, and Derby City Centre.

This review will also include an assessment of Ambergate for possible designation.

#### Sites and Monuments Record

A survey of historic structures along the Cromford Canal has been carried out and these are being added to the Sites and Monuments Record.

Objective 4: Establish an accurate picture of the current condition and vulnerability of the cultural heritage

#### Buildings at Risk

One of the indicators of the condition of the Cultural Heritage is the Buildings at Risk Register. The Management Plan identified a number of Buildings considered to be at risk through neglect, disrepair, abuse or disuse within the site. Appendix 1 gives an updated version of the Buildings at Risk Register.

Repairs to the external shell of building No.1 at Cromford Mill are complete and it has been removed from the Derbyshire Building at Risk Register. However it is still included in the English Heritage Register.

With financial help from the National Lottery and the Architectural Heritage Fund, The Arkwright Society has nearly completed the repair and conversion of the Slinter cottage a former bobbin mill. This is to provide holiday accommodation on the first floor and a display and interpretation of the water wheel mechanism and the Slinter Wood on the ground floor. Grant aid from the Aggregates Levy Sustainability Fund from Derbyshire County Council has enabled the restoration of the waterwheel and the construction of new sluices.

The Canal Cottages at Ambergate have been sold and the new owner has repaired the property to a high standard for use as a private house.

As the repair of these two buildings is almost complete their removal from the Buildings at Risk Register is imminent.

The original Buildings at Risk appendix did not include the Aqueduct at Cromford Mill, which was severely damaged by a lorry in November 2002, and this is added to the list. Preparations are in hand for its restoration at a cost of c.£300,000, to be met by the lorry companies insurers

Some of these buildings are listed at the higher grades I and II\* and are key buildings to the Outstanding Universal Value of the site and therefore project sheets were produced in the Management Plan to identify the priority works. Progress is being made on these projects however due to their scale and funding issues the works are yet to be completed. The Cromford Mill project is particularly large scale and complex, with a major programme underway to restore the buildings. This year has seen the completion of repairs to Building No. 1, the stonework repairs and new windows have been completed to Building No.17 and work to the stonework and windows of Building No18 (1771 Mill) is well in hand with applications being submitted to the Local Planning Authority for further repair and rebuilding works.

The table below presents a summary of works undertaken in the past year.

<b>BUILDING</b>	<b>PROGRESS TO DATE</b>
7 The Hill and Outbuildings Cromford	Listed building consent and planning permission granted in 2003 for conversion and repair works.
Cromford Mill, Building No 1	Repairs to the external shell are complete and this has been removed from the Derbyshire Buildings at Risk Register
Cromford Mill, Building No 17	The external stonework repairs are now complete. The building was indicated as a risk grade 4 in 1999 and became risk grade 5 in 2003.

Cromford Mill, Building No 18	Repair work in progress. Applications for planning permission and listed building consent have been lodged for determination by DDDC. These include 'repairs/alterations' to alleviate the severe structural problems at the north end and proposals to reinstate the upper floors/roof and the waterwheel against the east wall. Lottery funding to address works.
Cromford Mill, Aqueduct	Proposals for the reconstruction have been prepared and the estimate for repair is between £200,000 and £400,000
Aqueduct Cottages (Lengthman's Cottage) Lea	No progress
Lea Bridge Cottages, Lea	No progress
North Mill, Footbridge and Weirs	Condition studies completed. Discussions are taking place with the new owners regarding the urgent repairs that are required to the North Mill. Derbyshire County Council is looking into means of protecting the footbridge.
Former Congregational Church, Belper	This property has recently been bought and is the subject of applications for listed building consent and planning permission for conversion into a single dwelling. However, the project will not be viable unless a grant is made available under the THI scheme.
Dalley Farm and Outbuildings, Belper	Draft Development Brief produced by Amber Valley Borough Council. Awaiting comments from English Heritage.
Foreman's Cottage, Darley Abbey Mills	No progress
The Fishing Lodge, Mill Road, Cromford	In 2003 it was considered that the building had deteriorated from its condition (risk grade 4 in 1999), especially the roof and the stonework on the south elevation. Grant aid had been approved under the previous CAP but never taken up. No current progress.

### Condition Surveys

A condition survey of the North Mill at Belper has been completed, which has identified a number of works that are urgently required and recommended the most appropriate means of carrying them out. The *most* urgent of these works are the repairs to the roof, and the new owners have confirmed that they are committed to undertaking roof repairs as soon as possible. An application for Listed Building Consent is awaited shortly.

Monitoring and assessment are now complete on the serious deterioration to the parapet walls and roof on the towers of Masson Mills at Matlock Bath. A full report and costings are now in hand in order to go to the next stage of finding the funding and undertaking the repairs.

In an attempt to address concerns about the condition of the grade II\* listed Horseshoe Weir, at Belper, an inspection was undertaken by a specialist team of underwater divers in January 2004. The report found the structure to be generally in a fair condition, with some open joints to the masonry, most notably at its base, but requiring repair to be carried out soon if deterioration is not to escalate. Recommendations for its maintenance and repair include the pressure pointing of the open joints, ideally within the next 2 to 3 years and repair to the stone invert on the downstream side of the weir.

A report making recommendations to assist the local planning authority to secure the appropriate level of maintenance work is being prepared.

Derbyshire County Council has commissioned a study of the history, built form and cultural significance of the length of the Cromford Canal between Cromford and Ambergate as well as an ecological study with grant support from the Heritage Lottery Fund. A management, interpretation and access study for the whole of the County Council's estate in Cromford is also being progressed.

The implementation of the report's findings will be a major challenge for the coming years, with considerable potential for economic regeneration of the area.

In response to a request from Cromford Parish Council the County Council has produced a condition study of the 'Bear Pit', located behind the Market Place. This is part of Richard Arkwright's water powered system and is a scheduled Ancient Monument.

Objective 5: Encourage owners to ensure that maintenance, repair and restoration is carried out sympathetically

#### Heritage Economic Regeneration Scheme (HERS)

Following inscription, an area based partnership grant scheme for the repair and restoration of historic buildings and enhancement of public spaces within the Site; the Derwent Valley Heritage Economic Regeneration Scheme (HERS), was approved by English Heritage, to operate, initially for a three-year period from April 2001 to March 2004. Despite being limited to the national guidelines for the operation of a HERS, offers of grant assistance in excess of £200,000 have been made to property owners across the World Heritage Site during the first three year period of the HERS scheme.

In Cromford, the scheme guidelines resulted in it not being as accessible to the owners of the important workers housing as in previous years, though approximately £65,000 have been offered for building repair and restoration to properties in the village.

A high level of demand for grants continues in Belper, even from owners of properties in commercial use. The frontage properties of Bridge Street and Chapel Street, fronting the heavily-trafficked A6, have been targeted for assistance under the HERS scheme, in anticipation of the impending THI addressing the larger conservation area of Belper and Milford, with £117,000 being offered between 2001/4.

The use of grant monies for historic building repair in Darley Abbey has been delayed pending major research undertaking and the formulation of strategic policies for the re-use of the complex of significant mill buildings. It is anticipated that the demand for grant assistance towards the conservation of the mill buildings will increase in the forthcoming year.

During the past financial year, (2003/4) £101,754 has been offered across the three settlements, towards totals eligible costs of £190,051, benefiting approximately 20 properties of historic interest, an area of environmental enhancement adjacent to the Cromford millpond and enabling a study to be commissioned for the development of the grant scheme beyond 2005.

Subsequently, an extension, for one further year of the grant scheme has been confirmed by English Heritage which will run until March 2005, and while the allocation from English Heritage has been substantially reduced to £50,000 across the three authorities, it is anticipated that as the scheme develops, the more of the structures that contribute to the Site's outstanding universal significance will be eligible under the scheme.

### Belper/Milford Townscape Heritage Initiative(THI)

A bid for a Townscape Heritage Initiative has been made for the Belper and Milford Conservation Area. A formal decision on the match funding from the East Midlands Development Agency is due shortly. Details of the contract between Amber Valley Borough Council and the Heritage Lottery Fund are being finalised.

Objective 6: Maintain and enhance the quality and distinctiveness of the Derwent Valley Mills Cultural Landscape

### Conservation Area Character Appraisals

Amber Valley Borough Council, to take account of the new Belper and Milford Conservation Area boundary, is now carrying out a revision of the Belper Conservation Area Character Appraisal.

Cromford & Matlock Bath CAs are due for appraisal in Years 5-7 of DDDC work programme – 2007/9 although consideration may be given to earlier review, subject to Committee approval.

High Peak Junction / Castle Top / Lea Bridge due for appraisal in Years 8-10 of DDDC work programme.

An appraisal of Darley Abbey Conservation Area has been carried out but it is awaiting further information from English Heritage to enable publication. The appraisal does include recommendation for an extension to the conservation area boundary to include Darley Abbey Park.

### Environmental Improvements

WS Atkins have submitted a final draft of the Cromford historic paving restoration report. The report, funded by the English Heritage administered Aggregates Levy Sustainability Fund, has examined a range of environmental improvement projects around Cromford that:

- Restore remaining areas of historic paving;
- Reinstate 'historic' paving where there is clear evidence that it existed previously;
- Identified modern materials that are sympathetic to their historic setting; and
- Minimise the negative impact of traffic, signage and lighting on the historic environment.

The final report will form a master plan for environmental improvements in Cromford and identifies a number of discreet schemes. These schemes include:

- Improvements to the approach to Cromford Railway Station;
- Road/traffic management improvements to Lea Road, Cromford Bridge, Mill Road, and the main A6 junction;
- Improvements to the alleys leading off Cromford Hill;
- Improvements to Cromford Hill; and
- The restoration of the historic paving on North Street.

Outline cost estimates are included in the report for all the schemes. The report can now be used to bid for additional funding to develop the identified schemes to a level of detail suitable for their implementation.

Objective 7: Protect and enhance the character of parks and gardens, particularly those included in the English Heritage Register

Derby City Council has been looking at the protection for Darley Abbey Park as part of the Character Appraisal of the Darley Abbey Conservation area.

Objective 8: Protect and enhance areas of landscape character within the site

#### Landscape Character Assessment

Derbyshire County Council had published *The Landscape Character of Derbyshire, which by map and written descriptions identifies all the Landscape Character Types in the World Heritage Site and Buffer Zone*. In addition the publication includes summary tables of landscape management guidelines.

Work will proceed within the Landscape Character Assessment Project to produce detailed landscape design and management guidelines.

Objective 9: Conserve and enhance biodiversity within the site

Derbyshire County Council in conjunction with English Nature has been reviewing the nature conservation designations for the woodland and slopes within the World Heritage Site.

The Arkwright Society Slinger Project is responsible for the management of the Slinger Wood Estate, which is a 51 acres of ancient woodland containing industrial remains. In August 2003 the society purchased Dunsley Meadows which are small traditional meadows. Discussions are being held with English Nature to produce a management plan for them.

The Ravine WoodLIFE Project has obtained European funding for a major woodland conservation Project. This project may include Slinger Wood and initial requests have been made for its inclusion within the project.

The development briefs produced by Amber Valley Borough Council in October 2003 for the Milford Mill and Milford Foundry sites make reference to the need to conserve and enhance biodiversity within these redevelopment sites.

Objective 10: Ensure that effective measures are in place to deal with risks and hazards that may threaten the site

#### Flood Action Plans

The Environment agency is undertaking a strategic review of flooding and flood management along the River Derwent from Ladybower Reservoir to Derby. A scoping report has been produced for consultation and English Heritage has made a detailed response. The Project Manager has been invited to give a presentation on the work to date to the Technical Panel in June 2004.

This year the key mills did not suffer from the usual flooding problems, in particular Strutt's North Mill, Belper which only had one small flood.

#### Fire Action Plans

Initial contact has been made with the Derbyshire Fire and Rescue Service regarding risk preparedness. It is an objective for the coming year to carryout fire familiarisation visits to key mill sites and historic settlements.

#### Vehicle Risk

In the light of the substantial destruction of the aqueduct at Cromford by a lorry, the need for protection measures to the grade II\* listed road archway and footbridge at Belper Mills has been highlighted. A

proposal has been recommended for warning system to be installed, however approval needs to be obtained for use of land for turning of vehicles, and funding for the warning signs needs to be found.

## Public Awareness, Education and Research

Article 27 of the World Heritage Convention states ‘the State Parties to this Convention shall endeavour by all appropriate means and in particular by educational and information programmes, to strengthen appreciation and respect by their peoples of the cultural and natural heritage.’

The World Heritage Site has an immense educational and cultural value. By allowing people to experience the site through visits, activities, and dissemination of information will enrich their knowledge and understanding of where they live, work and play.

Objective 11: Co-ordinate information from all sources to provide a comprehensive site database

### GIS Database

The transfer of key information to dmap system of Derbyshire County Council is near completion. This information needs updating and checking prior to it becoming available via the website.

Objective 12: Encourage and promote further research into the historical, archaeological and other values of the site and its constituent elements

### Research

Research into the industrial heritage of Darley Abbey is nearly complete and it is hoped that this research can soon be published.

### Further Education

A number of students studying Tourism and Architectural Conservation have used the World Heritage Site as the subject of their graduate and post graduate thesis. Members of the partnership have provided assistance with their research.

Objective 13: Encourage a cohesive strategy for the presentation and interpretation of the site

### Museum Development Plans

The World Heritage Site status has lead to name changes to two of the key sites and reassessment of their collections and displays. The interpretation of the sites will focus on each of their unique qualities and individual contribution they made to the development of the textile industries of the whole Derwent Valley.

The Derby Silk Mill and Industrial Museum which was often shortened to the Industrial Museum has been renamed The Silk Mill – Derby’s Museum of industry and history. This reflects more fully the importance of the site in the development of textile manufacture in the area as well as the role of Derby in the industrial age.

Derby City Council has secured £35,000 from DDEP as partnership funding of a £70,000 project. This will provide a new interactive display to enable visitors to understand the complex building history and the importance of the Silk Mill and its contribution to the development of the textile industry in the Derwent Valley. The proposal includes improvements to the exterior of the building to provide more co-ordinated signage and improve the environmental quality of the exterior space.

The Silk Mill was awarded a Gold Award in the National Green Apple Civic Pride Awards. This scheme is run by The Green Organisation, and rewards 'buildings that enhance the environment and are a source of civic pride'.

Belper North Mill has become Strutt's North Mill Belper thus emphasising the importance of William Strutt and the innovative methods he employed in the construction of the mill. Exhibition designers have been commissioned to re-design the exhibition space and the proposals will be implemented in August with the aid of a £40,000 grant from the Heritage Lottery Fund.

At Masson Mills restoration of the very rare 1900 Asa Lees condensor mules and the cotton scutcher is continuing. Early knitting frames have arrived to enhance and complement the story of cotton. In addition plans for the construction of waterframes are progressing.

#### Interpretation and Brand Guide

The Brand and Interpretation Guides were published in 2002. These have proved a useful tool in creating a quality brand identity for the site. There have been some difficulties in ensuring that the guidelines are interpreted correctly and the emblem is used only where it has received express approval. Some gaps in information have been identified, in particular, in relation to signage. The guides are therefore being revised and put into electronic form in order that they can be accessed from the website and continually updated.

#### Objective 14: Develop Co-ordinated strategies for site publicity

This objective is related to the development of a marketing strategy for the site which is in turn inextricably linked to developing mechanisms to unlock the educational potential of the site. It is therefore hard to separate this objective from Objective 15 and 21. In the coming year the grant from DDEP which is funding the part time post of Communications and Outreach Officer will enable the development of an all encompassing strategy pulling all these strands together.

The actions sited under this objective in the Management plan includes a number of actions including the production of a newsletter and site wide leaflets.

The 3<sup>rd</sup> issue of the World Heritage Site Newsletter has been produced and 38,000 copies were distributed to households within the site and surrounding area in December. An additional 7,000 copies of the newsletter have been distributed to the main key sites, local libraries and Council offices. The newsletter is also available on line through the local authority websites (appendix 2).

The newsletter contains articles on the latest developments within the site. The lead article being the acquisition of the portrait of Richard Arkwright junior, his wife and child which is now on display in the Wright Gallery at Derby Museum. The local and national support demonstrates the importance of the painting to the area and its acquisition enhances the Museum and Art Gallery as a regional tourist attraction. A number of reports relate to recent reports and plans to conserve the heritage significance of the site. A piece on the Milford and Mackeney resident's well dressings project, which adopted the World Heritage Sites for this year's theme. This project indicates the growing community 'ownership' of the project.

The updated World Heritage Site concise visitor guide promotional leaflet has been produced and 100,000 copies will be distributed through the year to Tourist Information Centres nationwide and to tourism attractions local libraries, council offices and accommodation suppliers in Derbyshire. An electronic version of the guide in pdf form has been distributed for display on all the local council websites and the key World Heritage Sites.

In terms of press coverage this was mainly related to specific events in particular considerable national coverage of the fundraising appeal for the Joseph Wright of Derby painting of Richard Arkwright And the visit of The Prince of Wales to Cromford Mill was a key local event.

In summer 2003 Cromford Mill was selected to be one of the 30 historic buildings in need of conservation featured on the BBC 2 Restoration series. This raised the profile of the mill and local radio and newspapers picked up on the story.

The emphasis of most of the site publicity has been related to the built environment and it has been suggested that there is a need to promote the important natural environment in order to redress the balance.

Objective 15: Develop mechanisms to facilitate access to the site and to unlock its full potential as an education an learning resource

The World Heritage Site can provide not only a venue for projects but more importantly it can provide inspiration for creative projects in conjunction with learning more about the site itself. In addition this is also a way of making the site accessible to a wider audience. As a result of liaison between the heritage sites and advisers, and funding from DDEP are number of initiatives are underway.

#### Arts Projects

A two year arts programme has been created to bring the history of the World Heritage Site alive for the people who live in and around the site. The proposed project has four strands. Each strand will be managed by community arts groups and will involve artists working with a range of local community groups to produce a variety of different artworks. An HLF grant of £50,000 has been secured for the first two strands of the project with additional funding of £15,000 from Derby and Derbyshire Economic Partnership and contribution from Derby City Council and Derbyshire County Council to enable delivery of all four strands.

Development of the first two strands is underway. Fleets Arts are taking the lead on a literature and textile based project - *Spinning a Yarn* and members of Learning Through Arts have been visiting schools to bring children together to perform a piece of contemporary physical theatre based on the history of young mill workers.

It is anticipated that both these projects will take place during summer 2004.

The *Current Rumours* exhibition by Caravan (Amber Valley Artists' Network) displayed at the Riverside Centre, Belper from 3 – 10 October 2003 explored the political and visual exploration of the World Heritage Site, its natural and artificial environments, through performance, installations, projection and 3D and 2D work.

In May the annual Matlock Bath Pro-LoCo Art Competition and prize giving was held at Sir Richard Arkwright's Masson Mills.

In June 2003 Belper School won 'Best single Entry from a School' prize in a national arts project – *Designs on Britain* for their work based on the World Heritage Site. The work was exhibited at Chatsworth and the Royal Institute of British Architects Headquarters in London. Students from Belper

School attended the awards ceremony in London. The work may be seen on the web at [www.artsinform.com](http://www.artsinform.com) .

### Publications

Thanks to the generosity of two sponsors, The University of Derby and The Derbyshire, a lavishly illustrated book *The Derwent Valley Mills and their Communities* was published. The publication has its origin in the nomination document submitted to UNESCO as part of the bid for World Heritage Status. The book tells the story of the historic events during the 18<sup>th</sup> century, which took place in the Derwent Valley between Matlock Bath and Derby as the new factory system was born and took shape.

An Education Charity has been registered via the Research and Publications Panel. A grant of £15,000 from DDEP has enabled the establishment of a Revolving Fund in order to facilitate the publication of material.

Following the successful completion of the Derwent Valley Heritage Way, Jarrolds have published a guidebook describing the route in detail from Ladybower Reservoir to Shardlow. It was written by Kevin Borman and includes maps, information on access by public transport and details of the highlights along the route. The four central sections cover the route as it passes through the World Heritage Site.

### Education

In order to encourage schools to use the site as a learning resource it was decided that an education directory for teachers should be produced. A grant has enabled this work to be commissioned. The initial draft has been completed and will soon be ready for consultation prior to publication. This directory will be distributed to all Derbyshire schools. It will also be available at each visitor centre. The directory will be produced in the form of a hard copy folder to which the school can add leaflets, photographs and maps and as a CD.

In May 2003 a film of Sir Richard Arkwright's Masson Mills was made by the Discovery Channel, which is regularly shown as part of the current series 'Industrial Revelations' presented by Mark Williams. Between July and October 2003, a TV company filmed, in the textile districts of Lancashire, Yorkshire and Derbyshire(Masson Mills), a one-hour educational video showing the Industrial Revolution in the cotton industry, which is to be released shortly.

## Transportation

Transportation issues play a key role in the long terms conservation and management of the site. It is essential to improve the existing system particularly the integration of different modes of travel as well as encouraging more sustainable forms of transport.

Objectives 16: Identify and review transportation problems and opportunities within the site and on routes giving access to the site

### Transportation Study

The Transportation Study was completed during the summer of 2003. Its findings revealed that most visitors to the mill sites, apart from the Silk Mill, in Derby, were made by car and included one or more stops at other places. The study also found that visitors to the DVMWHS key attractions, at present, make an insignificant contribution to road traffic congestion. There are many reasons for visiting or residing in the World Heritage Site and that there were no straightforward answers to solving traffic congestion. It recommended a number of long term intervention measures, including

- Better directional signing to site
- Better pedestrian and cyclist access facilities
- Better bus and train services
- Better parking management within the World Heritage Site
- traffic calming in sensitive areas
- Park and Ride Sites as a long term solution

The Transport Panel is now working towards developing some of these ideas in partnership with the Mill owners and other organisations including the Derwent Valley Rural Transport Partnership, and local authorities. Initially it is hoped to develop pilot projects including Parking Studies in Cromford and Belper to see how residents and visitor parking can be better managed, and looking at how access to Darley Abbey from Derby City centre can be improved.

### The Derwent Valley Heritage Way

The Duke of Devonshire opened the Derwent Valley Heritage Way in April of this year. This project by Derwent Valley Trust has resulted in the creation of a 55 mile continuous walking route between Ladybower Reservoir in the north to Shardlow in the south. The route passes through the entire length of the World Heritage Site. This well marked walking route provides a sustainable mode of accessing the site and is a key part of the developing integrated transport system.

Objective 17: Investigate the potential for better transport integration within the site and buffer zone

The Rural Transport Partnership has secured a number of improvements to the train and bus network in order to provide a better public transport service.

### Train Services

Information cases have been installed at all stations and a local transport information poster has been produced for each station. These include a local map showing places of interest, location of bus stops, bus and train times, the route of the Heritage Way and taxi numbers. New cycle racks have been installed so that all stations now have this facility. New seating has been installed at Duffield and Belper. Belper Station has had two new waiting shelters, CCTV and new telephone installed. The station improvement also includes footpath repairs, new signs and the installation of World Heritage Signs. Cromford Station has had a new footpath and street lighting installed on the station approach road and improved directional signing for pedestrians to and from the station.

### Bus Services

Trent Burton are creating Derwent Valley branded buses which will feature images and routes within Derwent Valley including the four of the key mill sites which are open to the public. The designs are now being finalised and should be put on the buses during June. A bid for £6,750 submitted to the LTP fund by the RTP, for information points at key bus stops within the Derwent Valley, was successful.

The integration of different modes of transport within the Derwent Valley remains limited, in particular the lack of through ticketing due to the number of different operators. However there is integrated ticketing offered between the Matlock to Derby railway and the R61, R62, R63, R64, Transpeak and 140/141/142 services between common points along the A6 corridor.

### River Navigation Feasibility Study

One of the recommendations of the Transportation Study was the re-introduction of a River boat service between Derby City Centre and Darley Abbey. With funding from DDEP the Partnership commissioned a feasibility study into the re-introduction of the service. The report concluded that the best form of service would be for a larger seater boat, which is capable of accommodating wheel chair access. In order to implement it would require approx. £250,000 of infrastructure works to provide the landing stages.

Objective 18: Ensure that Local Transport Plans and the proposals of other transport providers take into account the conservation needs of the whole site, including bio-diversity issues

Consultation and discussions are ongoing to ensure that these plans seek to improve the appearance and conservation of the World Heritage Site.

## Sustainable Tourism

Tourism is a key industry as it not only contributes to the revenue of the sites themselves thus aiding their repair and restoration but it can also help support local business resulting in economic benefit to the local community. Although there is a need for a careful balance to be struck between protecting the heritage asset and amenity of local residents and tourism. Pressure from an increased number of visitors is most likely to be expressed in terms of car parking and traffic management, which is addressed under the transportation section.

For the site to prosper there is a need for a strong economic base for the communities. At present, the tourist trade and employment presented by the key sites is limited and is insufficient in itself to support the local economy. However the site as a whole is an important heritage asset and can play a key role in the sustainability of the communities within it and as part of heritage led regeneration. Belper has been named a one of the nine 'Beacon Towns' chosen by the Countryside Agency as test beds for a new initiative aimed at revitalising England's Market Towns. In addition the Heritage led Regeneration Scheme and potentially Townscape Heritage Initiative are vehicles which will help deliver sustained economic vitality of the community.

Objective 19: Assess the capacity of individual locations within the site to absorb tourism and derive a sustainable tourism strategy which benefits the local economy

As part of the Transportation Study visitor surveys were carried out to ascertain both numbers of visitors and mode of transport to the site as well as a breakdown of age visitor and distance travelled. These surveys were carried out at three of the sites in 2002.

As some of the sites are free entry there is no definite data on visitor numbers to each of the main mill sites let alone the World Heritage Site as a whole. The Silk Mill had a total of 30,010 visitors of which 3000 in total were children, there were specifically 32 separate school visits bringing a total number of 963 children. At Masson Mills there were c.17,500 visitors to the textile museum itself. The number of people who visit the retail outlet part of the site, where the historic building is incidental to the purpose of their visit, will be considerably higher.

At present, there is not considered to be a problem with site capacity however more sophisticated data collection and information is required in order to inform management considerations for the site and for tourism monitoring.

Objective 20: Encourage individual visitor attractions to adopt the principles of the Management Plan in their individual strategies

All the visitor attractions are involved in the delivery of the objectives of the Management Plan. The Site Co-ordinator, Communications and Outreach Officer and members of the Partnership are continually encouraging owners to adopt the principles of the plan. For example, Strutt's North Mill, Belper was sold recently and Amber Valley Borough Council has been in discussions with the new owners regarding repairs to the property and proposals for future use.

Objective 21: Develop an integrated marketing strategy for the site which takes account of the critical balance between conservation and tourism

At present there is no specific marketing strategy for the site as a whole as resources have been targeted the conservation of the site itself. The development of such a strategy will be one of the objectives of the Tourism, Arts and Heritage Sites Panel for the coming year.

Objective 22: Ensure integration of strategies for tourism within the site with wider strategies pursued by local, county-wide and regional agencies

In October The East Midlands Development Agency (EMDA) produced its Tourism Strategy which recognised the Derwent Valley Mills as a site of international, national and regional importance and a cultural treasure to be trumpeted. EMDA is in the progress of restructuring how tourism is delivered within the East Midlands and is establishing Destination Management Partnerships(DMP).

As part of this process Derbyshire Council County is drafting a business plan that will form the basis for the Peak District and Derbyshire DMP. It is considered that the DVMWHS has and is developing a key role in the tourism industry of Derbyshire, and is a site that is capable of delivering some of the strategic objectives for the region.

A section on the World Heritage Site has been provided on the interactive website for the Derbyshire and Peak District Destination Management System. This is accessed on the web at [www.derbyshire-thepeakdistrict.co.uk](http://www.derbyshire-thepeakdistrict.co.uk)

Derbyshire – the peak district visitor's guide includes a feature on the World Heritage Site as well as advertising of individual sites.

## Co-ordination, Monitoring and Consultation

Objective 23: Formulise arrangements for the continuing management of the site

The Management Plan established the main structure of the management of the site in the form of the Partnership, the Technical Panel and four sub panels of Transportation, Research and Publications, Tourism Arts and Heritage Sites (TAHS) and Industry and Commerce (Appendix 3).

This has remained largely unchanged except for some slight changes of membership on the Partnership. Robert Faithorn is the newly appointed chair of the TAHS Panel and Brian Ashby has been appointed by EMDA as the World Heritage Site's 'Business Champion' and will chair the new Industry and Commerce Forum.

David Farrington left the position of Co-ordinator in September 2003 which created a vacancy for two months before the new appointee, Isla Macneal, commenced work in November 2003. The funding from DDEP has facilitated the establishment of a new part time post of Communications and Outreach Officer until end of March 2006. Adrian Farmer has been in post since end of February 2004.

Objective 24: Instigate a continuing programme of consultation and public involvement

There is a continuing process of consultation and public involvement through a variety of vehicles such as via the newsletter, members of the partnership and community involvement. Local Groups and Parish Councils are included in the consultation process affecting their communities.

Objective 25: Establish a monitoring regime which informs priorities in the long-term

This annual report forms the basis of the establishment of a more formal monitoring regimes and as part of the process priorities have been set for the coming year.

The Management Plan included a timetable for delivery of projects for this year many of which are discussed in this report. The table below is a summary of the targets which were set and identifies which were achieved.

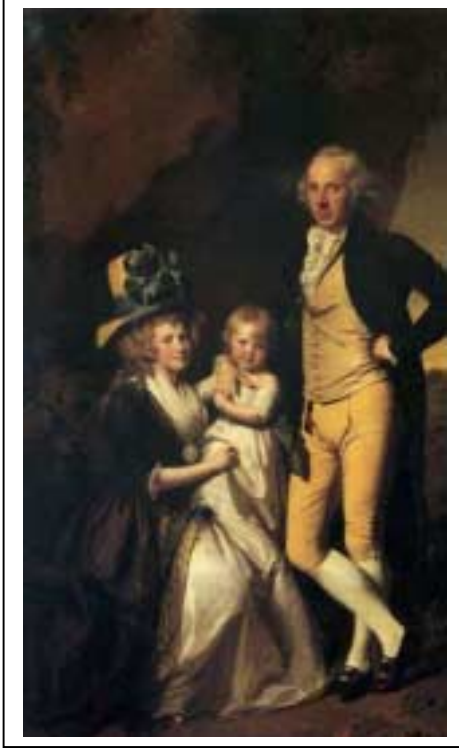
STRATEGIC ACTIONS	ACHIEVEMENT
Pursue funds under the Townscape Heritage Initiatives (Objective 5)	<b>Awaiting formal decisions from funding bodies. Contract with the HLF being finalised.</b>
Review Published advice and add new literature (Objective 5)	<b>On going</b>
Review status of Darley Abbey Park and Allestree Park (Objective 7)	<b>The inclusion of Darley Abbey Park in the Darley Abbey conservation area is under consideration</b>
Finalise landscape character assessment for Derbyshire (Objective 8)	<b>Target met</b>
Pursue Local Biodiversity Action Plan targets (Phase 1:2000-2003)	<b>In progress</b>

Establish a GIS database (Objective 11)	<b>Partially met ongoing project</b>
Establish a better liaison between major interpretative locations (Objective 13)	<b>In progress and building</b>
Develop site-wide guidelines for presentation, communication and interpretation (Objective 13)	<b>Target met in 2002 undergoing update</b>
Liase with Local Transport Plan Steering Groups (Objective 17)	<b>Good liaison established and resulting in improvements to the site</b>
Liase with transportation teams in the two highway authorities (Objective 17)	<b>Good liaison established and resulting in improvements to the site</b>
Prepare site capacity assessments for Masson, Cromford, Belper and Darley Abbey Mill(objective 19)	<b>The visitor surveys carried out as part of the transportation study provided some information</b>
Provide information and support for local shops and potential investors (Objective 19)	<b>To be pursued in the coming year</b>
Produce a marketing strategy (Objective 21)	<b>To be developed in 2004</b>
<b>PROJECT ACTIONS</b>	<b>ACHIEVEMENT</b>
7 The Hill and outbuilding, Cromford repairs and re-use (Action 1)	<b>Likely to progress in due course</b>
Building 17, Cromford Mill – complete shell repairs (Action 3)	<b>Target met</b>
Cromford Mill Aqueduct – reconstruction (Action 4B)	<b>In progress and it is hoped this can be implemented in the coming year.</b>
Former Congregational Church, Belper repairs (Action 8)	<b>The new owners require a grant under the THI scheme to make a residential conversion scheme viable</b>
Fishing Lodge, Cromford – external repairs (Action 11)	<b>No progress</b>
Cromford village – restoration and environmental enhancement (Action 15)	<b>In progress</b>
The Clusters, Belper – environmental enhancement(Action	<b>A detailed scheme is to be drawn up by consultants when the THI scheme is introduced.</b>



## Projects not Identified in the Management Plan

### Arkwright Portrait Campaign



An unexpected challenge presented itself to the Derwent Valley Mills Partnership. In order to prevent the loss of a cultural treasure from the site, a fundraising campaign was required to secure the purchase of *A Portrait of Richard Arkwright Junior with his wife Mary and Daughter Anne* by Joseph Wright of Derby. The Government placed a temporary bar on export of the portrait, in part, due to the representations made by members of the Partnership. It is considered that the painting forms an important social and cultural document and an integral part of the history of the site.

The campaign to raise £1,217,500 was launched in April 2003. In July a national fundraising launch event was held at the Tate Gallery London. The Duke of Devonshire was an influential member of the campaign and generously held a fundraising event at Chatsworth in August. The whole campaign received substantial national press coverage. The target was met on the September deadline. The Heritage Lottery Fund was a key contributor giving a maximum grant of £999,500 with Waste Recycling Environmental and the National Art Collections Fund providing substantial donations. Local support was also overwhelming with an incredible £147,000 coming from personal donations, groups and community sources. The result is that the painting now has a key position in the Wright Gallery in Derby Museum and Art Gallery. The painting was cleaned and all those who contributed to the campaign attended a reception in the Gallery in November.

The importance of the painting to the site raised an issue that the Management Plan had failed to address the management of portable artefacts, archives and specimens. As a result a working group has been created to initially produce policies, objectives and strategy for inclusion within the plan.

## Priorities for 2004/2005

**The greatest 'internal' challenge for 2004/05 is to identify a mechanism for sustainable funding for the DVMWHS's core management, post March 2006, when the DDEP funding ends.** A working party under the chairmanship of the Assistant Director for Development at Derby City has been established to address this issue.

The Management Plan identifies a number of priorities for the coming year but a number of new targets have been identified all of which are listed below.

- Creation of DVMWHS website.
- An increase in events within the site including; arts, leisure and educational.
- Review of conservation area boundaries and designations.
- Production of walking guides to the site.
- Produce a marketing strategy.
- Establish positive partnership working with the emerging Destination Management Partnership. Ensure that the development of the DVMWHS is part of the strategic planning for tourism of the County and Region.
- Pursue implementation of actions identified in the Tourism Strategy.
- Pursue commissioning further research of the cultural significance of the site.
- Develop policies on portable objects for inclusion in the Management Plan.
- Repair Aqueduct at Cromford Mill.
- Formulate Fire Action Plans.
- Formulate Flood Action Plans.
- Work with owners to pursue funding for essential repairs and planned maintenance to weirs and other water features.
- New interpretation room at Silk Mill
- Redesign of the exhibition space at Strutt's North Mill .
- Building 18 Cromford Mill – repairs and reinstatement.
- Publish Teachers Directory.
- Teachers Resource Packs.
- Secure funding and commence Townscape Heritage Initiative for Belper and Milford.

- Establish a second phase for the Derwent Valley Heritage Economic Regeneration Scheme.
- Pursue funding for Cromford Village environmental improvements.
- Pursue funding for repairs for Masson Mills.
- Essential repairs to Strutt's North Mill, Belper.
- Commission a feasibility study for stables at Darley Abbey.
- Submit application to the HLF for conservation of Belper River Gardens.
- Pursue publication of the Darley Abbey monograph.
- Work towards repair and reuse of Buildings at Risk.
- Installation of interpretation boards for Belper, Milford, Darley Abbey and Derby.
- Progress recommendations of the Transport Study.
- Ensure proposals to develop land west of the A6 at Belper are progressed without detriment to the areas Outstanding Universal Value to the maximum benefit of the development of tourism and economic growth generally.

## Buildings at Risk

Historic buildings at risk through neglect, disrepair, abuse or disuse in the nominated site, are included in a county-wide Buildings at Risk Register compiled jointly by Derbyshire County Council and the Derbyshire Historic Buildings Trust (DHBT). The Register, first published in 1989, was produced as a result of a survey of all grades of listed buildings and prominent non-listed buildings in conservation areas, undertaken by the Trust, and is reviewed and republished periodically.

An extract of the Register shows all the listed buildings within the World Heritage Site area, currently on the Register. When a resurvey of all the structures and buildings associated with the historic transportation infrastructure in the nominated site, has been carried out, it is expected that the numbers of entries on the Buildings at Risk Register will increase.

The table includes listed buildings appearing in the "English Heritage Register of Buildings at Risk 1998 2004" which covers Grade 1 and II\* listed buildings and Scheduled Ancient Monuments. The survey for the English Heritage Register adopted criteria which graded the buildings according to priorities for action, as follows:

- Immediate risk of further rapid deterioration or loss of fabric; no solution agreed
- Immediate risk of further rapid deterioration or loss of fabric; solution agreed but not yet implemented
- Slow decay; no solution agreed
- Slow decay; solution agreed but not yet implemented
- Under repair or in fair to good repair, but no user identified, or under threat of vacancy with no obvious new user (applicable only to buildings capable of beneficial use)
- Repair scheme in progress, and (where applicable) end use or user identified

The Derbyshire County Council and DHBT surveys used an earlier English Heritage risk category assessment system, combining building condition and occupancy, as follows. Both methods have been used in producing the table.

CONDITION		RISK CATEGORIES		
		Habitable	Non-Habitable	
Very Bad	: 1	Vacant	: 1 — 1	
		Partially Occupied	: 2 — 2	1A
		Occupied	: 3 — 3	
Poor	: 2	Vacant	: 1 — 3	3A
		Partially Occupied	: 2 — 3	
		Occupied	: 3 — 3	
Fair	: 3	Vacant	: 1 — 4	4A
		Partially Occupied	: 2 — 4	
		Occupied	: 3 — 4	
Good	: 4	Vacant	: 1 — 5	5A
		Partially Occupied	: 2 — 6	
		Occupied	: 3 — 6	

Individual project sheets have been produced for all buildings at risk listed grade I, II\* and all listed grade II which are in list category 1.



Parish	Building/Address	Status	Description	Owner	Priority for Action	Risk Category	Action Notes
Matlock-Bonsall	Slinger Cottage Via Gellia	II CA	C18. Gritstone. Tiled roof. Former mill. 2 storeys.	Arkwright Society	•	3 5	Restoration work nearly complete. Soon to be removed from register
Matlock-Cromford	Arkwright Mills Mill Road Building No 18	I CA SMR	Late C18. Gritstone and brick, former textile mill; modern roof. Once 5 storeys, now 3.	Arkwright Society	••••	1	Severe structural problems at north end. Planned for restoration as museum, to original height. Lottery fund application submitted 1998. Masonry repairs begun April 2000. Repair work ongoing, application for LBC and PP submitted.
	Building No 17	I CA SMR	Late C18. Gritstone. Burlington slate roof. 5 storeys.	Arkwright Society	•	4 5	Decontamination and repairs to external shell complete. Planning permission granted for conversion to lecture theatre/restaurant, subject to HLF application.
	Building No 1	I CA SMR	Late C18. Gritstone. Burlington slate roof. 'T' plan building of 4 storeys.	Arkwright Society	•	4	Modern additions removed. Shell largely restored. To be converted to museum with educational facilities subject to HLF application.
	Cromford Wharf Southern Warehouse	II CA SMR	Early C19. Gritstone. Welsh slate roof. 2 storeys.	DCC/ leased to Arkwright Society	•••	3 4	Repair work complete in use as offices and meeting rooms. 30 year full repairing lease between DCC and Arkwright Society. Priority under "CAP" Scheme.
	Aqueduct, Cromford Mill	I CA SMR	Cast iron aqueduct dated 1821 spans mill road from building 17	Arkwright Society		1A	Accidental damage to aqueduct 2002.
Matlock-Cromford (Cont)	Former Fishing Lodge, Mill Road	II CA	Early C18. Gritstone. Stone slate roof.	Private (Cromford Fly Fishing Club)	•••	4 3	Condition of building deteriorated especially roof and stonework on south elevation. Grant aid previously approved not taken up.

Parish	Building/Address	Status	Description	Owner	Priority for Action	Risk Category	Action Notes
	No 7 The Hill (Carline's Butchers)	II CA	Late C18. Rendered stone. Burlington slate roof. 3 storeys. House over shop.	Private	•••	3	Upper 2 floors unused. Single storey rear range ruinous and roofless. <b>HERS</b> priority. Subject to litigation to resolve ownership dispute. <b>LBC and PP granted 2003.</b>
	High Peak Junction	SAM CA	Workshop and offices	DCC		4	Building partially in use. Generally in reasonable condition
	Outbuilding to rear of No 7 The Hill	II CA	Gritstone. Tiled roof. Single storey.	Private	•••••	1	Ruin. Roof collapsing. Stone work deteriorating. 'CAP' priority.
	Cromford Railway Station; east platform building	II CA	c.1860. Station Waiting Room. Gritstone with Welsh slate roof. Chimney stacks partly removed.	Private	••••	3	Recently sold, with the Station House. Local Planning Authority involved in liaison with owner.
	Cottages at Lea Bridge	II CA	Late C18. Gritstone. Stone slate roof.	John Smedley Ltd	••••	1	Vacant. Owners unwilling to sell. Derbyshire HBT to negotiate partnership with owners to help facilitate repair and re-use. <b>Roof in extremely poor condition</b>
Dethick, Lea and Holloway	Lengthman's Cottage by Cromford Canal (also called Aqueduct Cottage)	II CA	Early C19. Gritstone. No roof. Single storey and attic.	Private	•••••	1	Empty. Ruinous. Poor access. No services. Arkwright Society negotiating purchase to consolidate as ruin.
Belper	Congregational Church, Green Lane	II CA	C19. Neo-Gothic. Gritstone. Welsh slate roofs. Tall prominent landmark.	Private	••••	1	A new owner is interested in converting the building for office use. Extensive repair work is required, especially to the roof. This is a target building for grant aid under the Townscape Heritage Initiative (THI) bid. <b>Sold 2002.</b>

Parish	Building/Address	Status	Description	Owner	Priority for Action	Risk Category	Action Notes
	1-3 High Street	II CA	Early C19. Gritstone and brick. Blue clay tiled roof.	Private	•••	3	Priority for grant-aid under the Townscape Heritage Initiative (THI) bid. Gable end in poor condition. Partially occupied; shop unit proposed to ground floor.
	Herbert Strutt School, Derby Road	II CA	1908. School designed by Hunter & Woodhouse. Stone and leaded-light mullioned windows.	DCC	••••	4	School is used to one third of its capacity. Extensive structural problems to mullioned windows with prohibitive repair costs.
	Nailers Workshop at 8 Joseph Street	II CA	C19. Purpose-built nailers shop. Gritstone. Tiled roof.	Private	••••	3	In use for storage/workshop by owner of 8 Joseph Street. Front elevation in poor condition. Broken lintel above door recently replaced.
	Dalley Farm – house and outbuildings Ashbourne Road English Heritage has divided this into 6 separate entries on their BAR register	II*	Mid C19. Model farm, developed by Strutt Estate. Stone and brick with tiled roofs. Unusual and rare survival.	Private	••	3	Part Vacant. Exemplary model farm of its period. House still occupied. Owners seeking new uses. A development/marketing brief is being prepared.

Parish	Building/Address	Status	Description	Owner	Priority for Action	Risk Category	Action Notes
	North Mill	I CA	1804. Former cotton spinning mill. Iron-framed, fire-proof construction, brick skin and vaulting. Westmoorland graduated slate roof (bitumen coated). Now in use as offices and visitor centre.	Godkin Holdings	....	4	Roof needs reslating; temporary repairs carried out 1997; brick parapet requires repointing and repairs to lead lined gutters. Condition survey repaired. Extensive window repairs necessary. <b>Sold 2003.</b>
	Road footbridge at Bridge Foot	II* CA	1795. Georgian footbridge linking former mills. Gritstone. Welsh roof slate.	Godkin Holdings	....	3	Vacant. Low arch often hit by high-sided vehicles. Bridge and approach re-signed in 1997. Condition survey prepared.
	Belper Weir	II	c1795. Horseshoe weir and sluices.	Godkin Holdings	....	4A	Tenanted to hydro-electric company using turbine house; some repair needed to weir walls. <b>Condition survey complete.</b>
Crich	Canal Cottages Matlock Road Ambergate	II	c1800. Canal Lengthman's Cottages. Gritstone. Stone slate and Welsh slate roofs. 3 storeys.	Private	...	3	<del>Poor condition. For Sale. Changed hands several times in recent years. These have been repaired and now occupied at house.</del>
Milford	The Tower Sunny Hill	II	c1839. Tall coursed stone tower. Part of Midland Railway development surveyed by George Stephenson.	Private	....	3	In poor condition. No viable use identified. Owner unwilling to sell.
Derby	Foreman's House Darley Abbey Mills Old Lane	II CA	Late C18. Red brick; 3 storeys. Curved façade, Welsh slate roof.	Private	.....	1	Vacant. In very bad condition.

Parish	Building/Address	Status	Description	Owner	Priority for Action	Risk Category	Action Notes
	East Mill Darley Abbey Mills Old Lane	I CA	1819/21. Red brick; Welsh slate roofs. Part of major complex of former cotton mills. 5 storeys.	Private	••••	3	Fully occupied. Roof and parts of walls in poor condition.
	West Mill Darley Abbey Mills Old Lane	I CA	1819/21. Red brick; Welsh slate roofs. Part of major complex of former cotton mills. 4 storeys.	Private	••••	3	Substantially unoccupied. In fair condition.
	Long Mill Darley Abbey Mills Old Lane	I CA	1782/89. Red brick; Welsh slate roofs. Part of major complex of former cotton mills. 5 storeys and attics.	Private	••••	3	Substantially unoccupied. Roof, parts of walls and upper floors in poor condition.
	Middle Mill Darley Abbey Mills Old Lane	I CA	1819/21 and later. Red brick; Flat roof. Part of major complex of former cotton mills. 5 storeys.	Private	••••	3	Fully occupied. Roof and parts of walls in poor condition.
	North Mill Darley Abbey Mills Old Lane	II* CA	c1830. Red brick. Welsh slate roof; 3 storeys.	Private	••••	3	Substantially unoccupied. Roof in poor condition. Walls fair.

- KEY
- CA Conservation Area
  - SMR Sites and Monuments Record
  - HLF Heritage Lottery Fund
  - CAP Conservation Area Partnership
  - HER Heritage Economic Regeneration
  - ■ To be removed from BAR

**POTENTIAL ADDITIONS TO BAR NEED TO CONSULT LPA**

St Mary's Bridge, Bridge Gate II\* C18 stone bridge of 3 arches, divided by buttresses each with a small pedimented niche.  
Derby City Council 3 General condition - poor. In need of immediate investigation.

Stables at Darley Abbey

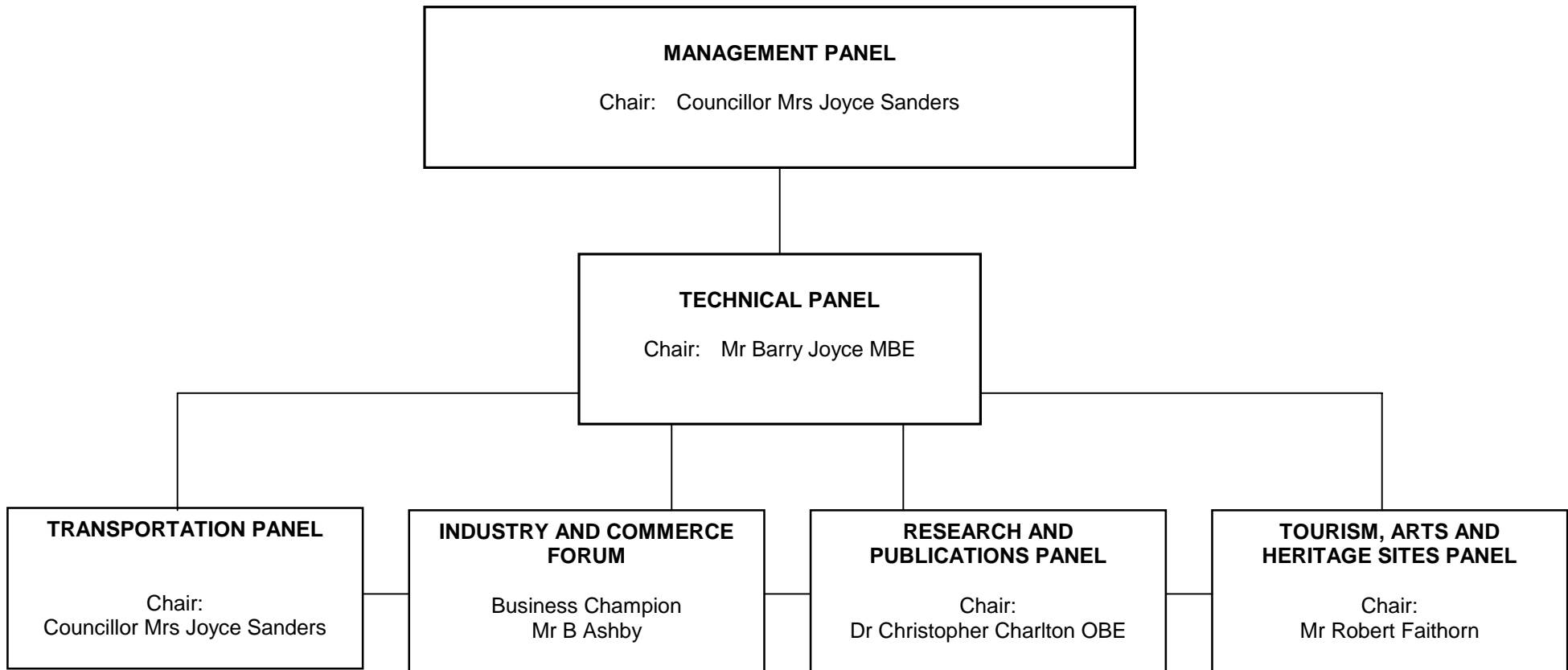
West platform building Cromford Station

Bridges and Embankments along the Derby to Matlock Line

Kiosk Gatehouse Darley Abbey

**DERWENT VALLEY MILLS WORLD HERITAGE SITE**

**CURRENT MANAGEMENT STRUCTURE**



## **Contact Information**

### **Employees of the Derwent Valley Mills Partnership:**

#### Full Time

Isla Macneal  
World Heritage Site Co-ordinator  
Derwent Valley Mills Partnership  
PO Box 6297  
Matlock  
Derbyshire DE4 3WJ  
T: 01629 585693  
E: isla.macneal@derbyshire.gov.uk

#### Part Time

Adrian Farmer  
Communications and Outreach Officer  
Derwent Valley Mills Partnership  
PO Box 6297  
Matlock  
Derbyshire  
DE4 3WJ  
T: 01629 585166  
E: adrian.farmer@derbyshire.gov.uk

**Current Membership of the Partnership**

Amber Valley Borough Council

Arkwright Society  
Belper North Mill  
Belper Town Council  
Cromford Parish Council  
Department for Culture, Media and Sport  
Derby City Council

Derby Conservation Area Advisory Committee  
Derbyshire Association of Local Councils  
representing: Alderwasley, Breadsall, Crich  
Duffield, Little Eaton Ripley, Wirksworth  
Derbyshire County Council

Derbyshire Dales District Council

Derwent Valley Mills Partnership

Derwent Valley Trust  
Dethick, Lea and Holloway Parish Council  
East Midlands Confederation of British Industry  
Derby and Derbyshire Economic Partnership  
English Heritage

English Nature  
Environment Agency  
Erewash Borough Council  
ICOMOS UK  
Learning and Skills Council Derbyshire  
Matlock Bath Parish Council  
Southern Derbyshire Chamber  
Friends of Cromford Canal  
Darley Abbey Mills  
TAHS Panel Chair  
Business Champion

**Management Panel**

Cllr J Nelson  
Mr C Whysall  
Dr C Charlton OBE  
Cllr G Carlile  
Cllr P Arnold  
Cllr A Watson

Cllr M Burgess  
Cllr P West  
Mr M Kaye  
Mr K Hamilton  
Cllr K MacArther

**Cllr Mrs J Sanders<sup>(1)</sup>**  
Cllr C Cutting  
Mr J Seymour  
Mr B Joyce  
Cllr G Stevens  
Mr M Hase  
Miss I Macneal  
Mr A Farmer  
Dr B Waters  
Mr J Hawksley  
Mr P Stevenson

Mr H Welfare

Dr T Moat  
Mr J Freeborough  
Cllr G K Hickton  
Ms S Denyer

Cllr K Butterfield

Mr T Robson  
Mr R Hartle  
Mr R Faithorn  
Mr B Ashby

**Technical Panel**

Mr C Whysall  
Mr R Thorley  
Dr C Charlton OBE  
Mrs M Smedley

Mr M Kaye  
Mr H Hopkinson

Mr B Joyce MBE<sup>(2)</sup>  
Mr G Blissett  
Mr C Hartley  
Ms R Westwood  
Mr M Hase  
Ms T McBurney  
Miss I Macneal  
Mr A Farmer

Mr D Wright  
Ms C Pyrah  
Dr C Young  
Dr T Moat

Mrs Y Wright  
Ms S Denyer  
Ms E Prentice

(1) Management Panel Chair

(2) Technical Panel Chair